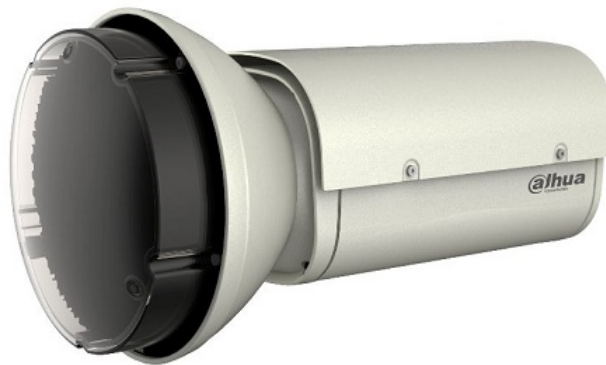


# ITALF-300AC-IR

## LED Strobe Lamp



## Order Information

ITALF-300AC-IR

## Features

- Adopt advanced steady flowing technique, precise and stable current control
- Small dimension and low consumption
- Optical grating optional, largely reduce the light pollution
- Low recycle time, meet the requirements of continuous snapshots

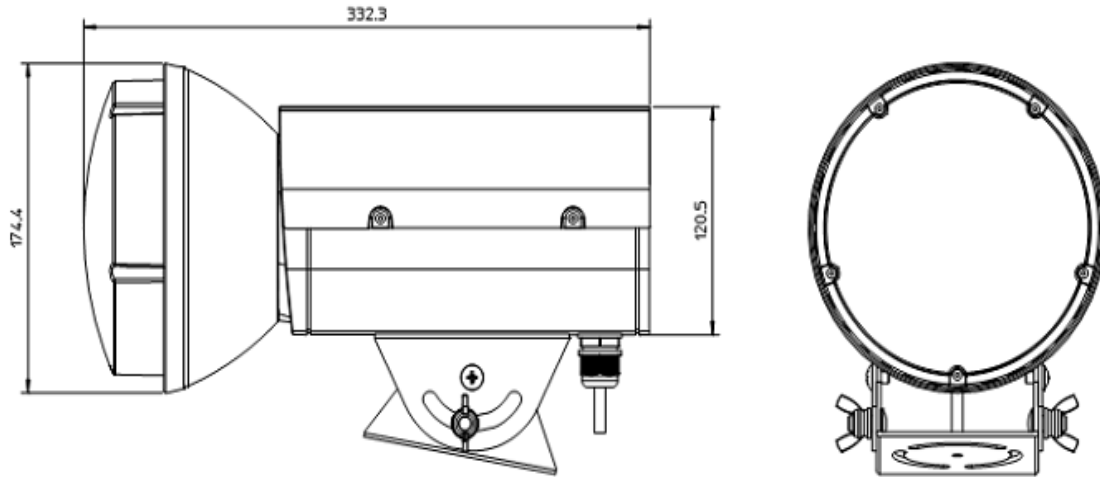
## Technical Specifications

Model	ITALF-300AC-IR
Synchronization Interface	1, snapshot signal input
Snapshot and Flash Synchronization	Support
Recycle Time	<80ms, support 2 continuous snapshot
Color Temperature	5800±200K
Exposure	64GN
Flash Duration	1/3000
Light Spot Range	12meters (Height: 6meters, distance: 23meters)
Anti-dazzle	Reserved
Trigger Mode	Dry contact trigger
Snap Distance	16-26 meters
Flash Lifetime	≥300 million times
Protection Level	IP65
Power	AC220V±10%
Consumption	<100W
Flash Capacity	≥300J
Work Temperature	-30°C~+70°C
Work Humidity	10%~95%

## ITALF-300AC-IR

Size	332.3mm ×174.4mm ×120.5mm
Installation	Rack mounting

### Dimensions (mm)



### Dahua Technology Co., Ltd.

1199 BinAn Road, Binjiang District, Hangzhou, China

Tel: +86-571-87688883

Fax: +86-571-87688815

Email: [overseas@dahuatech.com](mailto:overseas@dahuatech.com)

[www.dahuatech.com](http://www.dahuatech.com)

\*Design and specifications are subject to change without notice.

© 2015 Dahua Technology Co., Ltd.